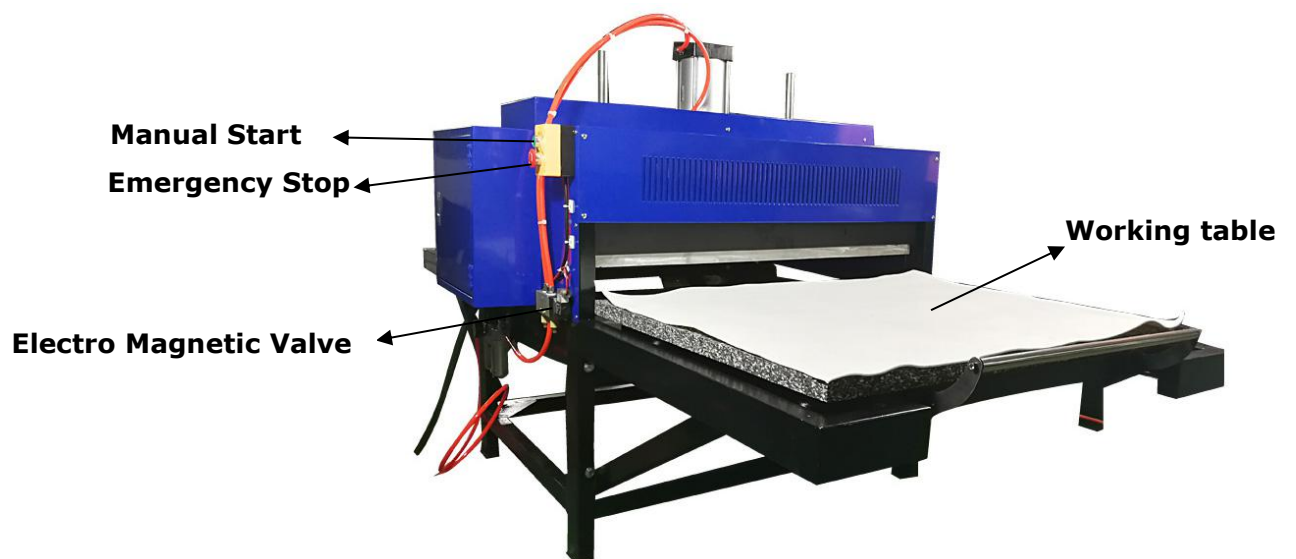
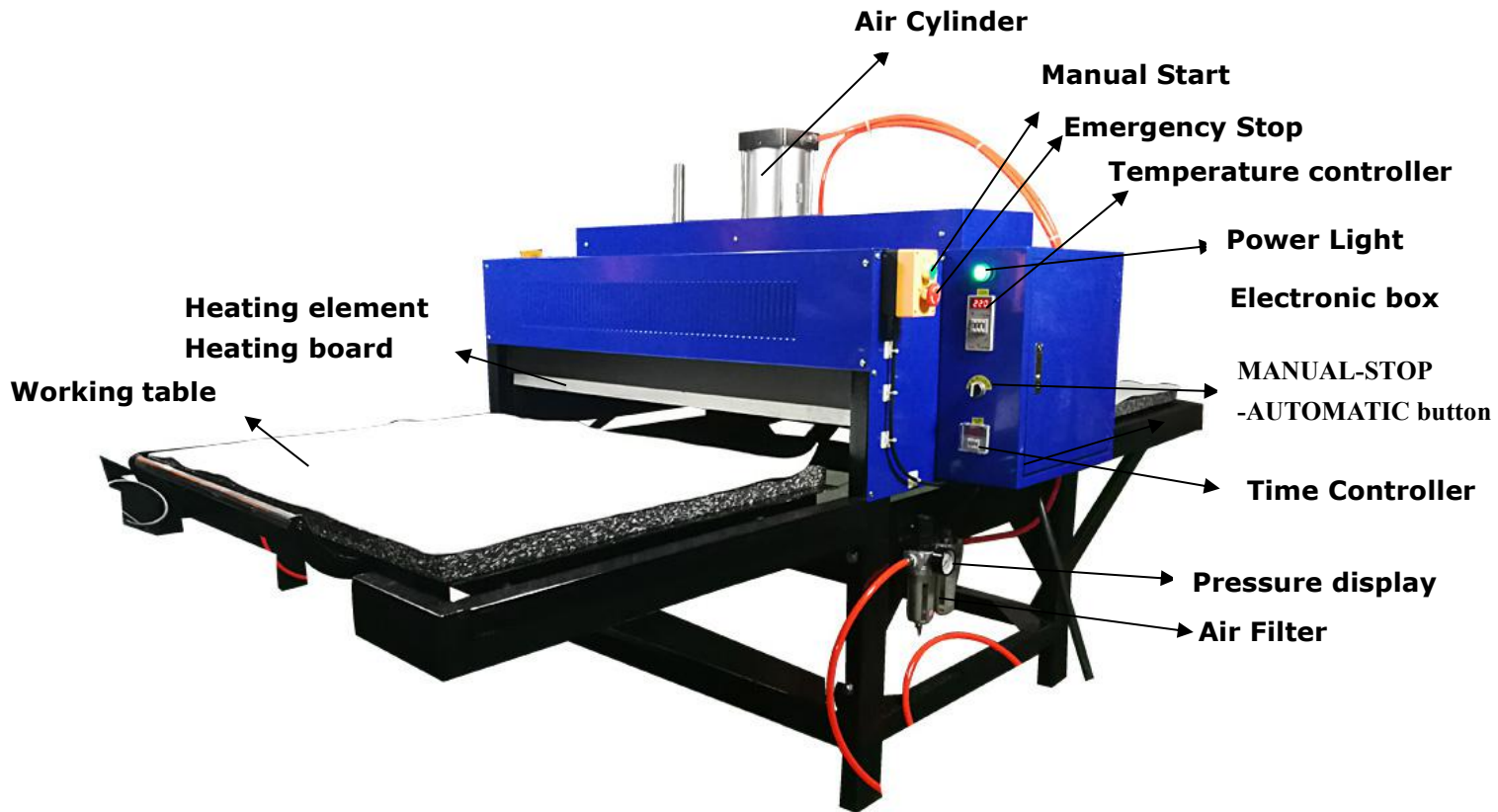


Automatic Sublimation Heat Press Machine CY-A

Manual User 100*120CM, 80*100CM



PRODUCT INTRUCTION :

This product is a pneumatic double stations sublimation heat transfer machine, it can be used for garments, Nylon Fabric , Polyester fabrics, Polyester cotton, flags , sports wears , carpets, arts and crafts , mouse pads, ceramics , glower , bags , shoes , bed necessities , umbrella ,curtains , coat metal products , coat glasses , advertisement products , swim wear , high temperature non-woven fabrics ,almost all flat products . Automatic operating , very useful for high quality and efficiency printing .

Specification of the size 80x100CM:

Product No.: SH180925-A-01			
Model No.	CY-A	Size	80*100CM
Voltage	~220V 3-Phase	Power	9KW
Temperature	0-250℃	Time	Adjustable

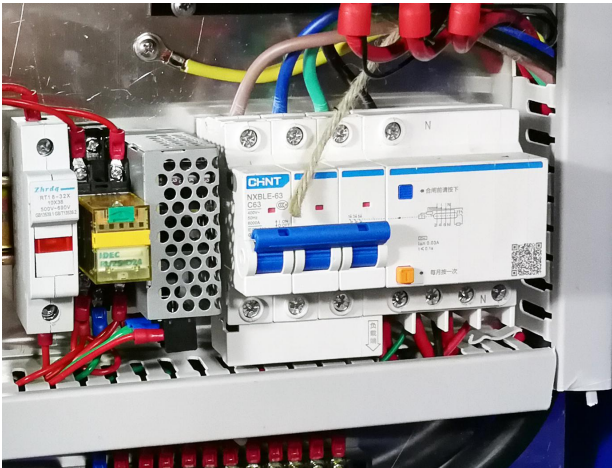
Specification of the size 120x100CM:

Product No.: SH180925-A-02			
Model No.	CY-A	Size	120*100CM
Voltage	~220V 3-Phase	Power	12KW
Temperature	0-250℃	Time	Adjustable

Operating Manuel:

ATTENTION: MAKE SURE OF GROUNDING LINE BEFORE WORKING !

1.Turn on the power



2.Connect air compressor



3. Set temperature

(for example 220 degree)



4.Set time

(for example 25 sec)



4. --Turn left to manual working. (MANUAL mode)

--Turn right to automatic working (AUTOMATIC mode)

--Turn middle to stop.



When the temperature reaches the Setting degree:

Push the work table into the machine to start transfer.

--If choose the MANUAL mode. Press the green button to start pressing down.

--If choose the AUTOMATIC mode, the machine will pressing down automatically when reaches the right position.

7. When something urgent happen , press the big red button to start Emergency stop . Turn to right when you ready to continue the work . (This is very important to turn to Right to release the Emergency Stop when you ready to continue the machine. If not the machine will not work.)



Electric circuit diagram

